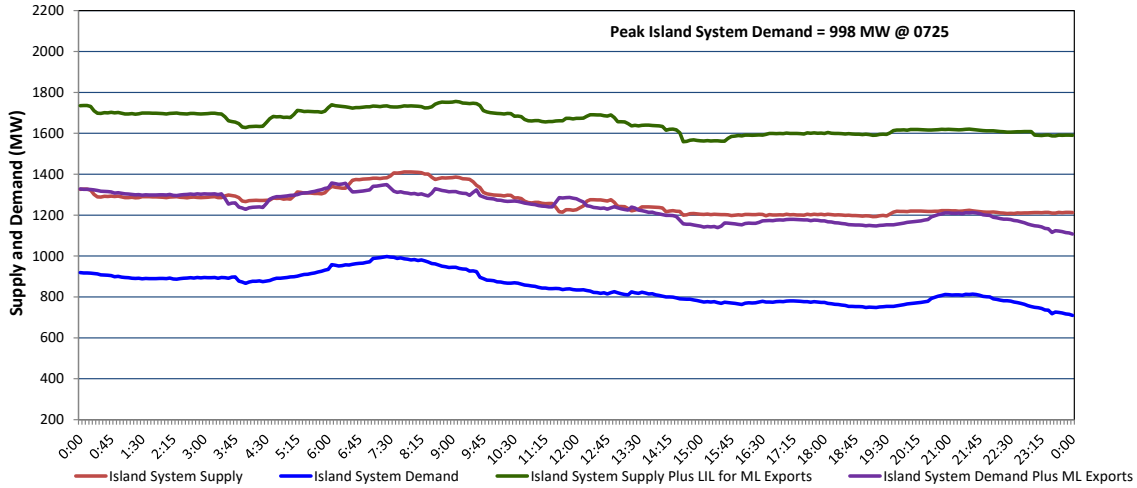


**Newfoundland Labrador Hydro (NLH)
Supply and Demand Status Report Filed Friday, May 15, 2026**

**Section 1
Island Interconnected System - Supply, Demand & Exports
Actual 24 Hour System Performance For Thursday, May 14, 2026**



Island Supply Notes For May 14, 2026

- A As of 1326 hours, February 05, 2026, Cat Arm Unit 2 available at 57 MW due to forced derating (67 MW).
- B As of 0800 hours, March 29, 2026, Holyrood Unit 3 unavailable due to planned outage (150 MW).
- C As of 1513 hours, April 16, 2026, St. Anthony Diesel Plant available at 7.7 MW due to forced derating (9.7 MW).
- D As of 1857 hours, April 17, 2026, Stephenville Gas Turbine available at 25 MW due to forced derating (50 MW).
- E As of 1527 hours, May 01, 2026, Holyrood Unit 1 available but not operating 166 MW (170 MW).
- F As of 0800 hours, May 06, 2026, Holyrood Unit 2 unavailable due to planned outage 40 MW (170 MW).
- G As of 1052 hours, May 06, 2026, Bay d'Espoir Unit 1 unavailable due to planned outage (76.5 MW).
- H As of 1052 hours, May 06, 2026, Bay d'Espoir Unit 2 unavailable due to planned outage (76.5 MW).
- I As of 0806 hours, May 09, 2026, Upper Salmon Unit unavailable due to forced outage (84 MW).
- J **At 0914 hours, May 14, 2026, Hawkes Bay Diesel Plant unavailable due to planned outage (5 MW).**
- K **At 1733 hours, May 14, 2026, Hawkes Bay Diesel Plant available (5 MW).**

**Section 2
Island Interconnected System - Supply, Demand & Outlook**

| Fri, May 15, 2026 | Island System Outlook ² | Seven-Day Forecast | Island System Daily Peak Demand (MW) | |
|--|------------------------------------|-------------------------|--------------------------------------|-----------------------|
| | | | Forecast ⁸ | Adjusted ⁶ |
| Island System Supply: ⁴ | 1,326 MW | Friday, May 15, 2026 | 985 | 935 |
| NLH Island Generation: ^{3,7} | 930 MW | Saturday, May 16, 2026 | 955 | 905 |
| NLH Island Power Purchases: ⁵ | 110 MW | Sunday, May 17, 2026 | 890 | 840 |
| NP and CBPP Owned Generation: | 220 MW | Monday, May 18, 2026 | 1,010 | 960 |
| LIL/ML Net Imports to Island: ⁹ | 66 MW | Tuesday, May 19, 2026 | 1,045 | 995 |
| 7-Day Island Peak Demand Forecast: | 1,090 MW | Wednesday, May 20, 2026 | 1,090 | 1,040 |
| | | Thursday, May 21, 2026 | 1,045 | 995 |

Island Supply Notes For May 15, 2026

- Notes:
1. Generation outages for running and corrective maintenance are included. These are not unusual for power system operations. They generally do not impact customer supply. Hydro schedules outages to system equipment whenever possible to coincide with periods when customer demands are low and sufficient supply reserves are available. However, from time to time equipment outages are necessary and reserves may be impacted.
 2. As of 0800 Hours.
 3. Gross continuous unit output.
 4. Gross output from all Island sources (including Note 3).
 5. NLH Island Power Purchases include: ML Imports, Exploits Generation, Rattle Brook, Star Lake, Wind Generation and capacity assistance (when applicable).
 6. Adjusted for interruptible load and the impact of voltage reduction when applicable.
 7. Due to limitations inherent in the design of combustion turbines, the output of combustion turbines may be reduced in the event that ambient temperatures exceed the threshold required for full rated output. This threshold is dependent on the design of each turbine.
 8. Does not include ML Exports.
 9. LIL Import sunk in the Island System. Actual LIL flows will be restricted by various system conditions including, but not limited to, Island Load, ML Exports and Avalon Unit status.

**Section 3
Island Peak Demand and Exports Information
Previous Day Actual Peak and Current Day Forecast Peak**

| | | | |
|-------------------|----------------------------------|------|-----------|
| Thu, May 14, 2026 | Island Peak Demand ¹⁰ | 7:25 | 998 MW |
| | Exports at Peak | | 352 MW |
| | LIL Net Imports to Island | | 1,296 MWh |
| Fri, May 15, 2026 | Forecast Island Peak Demand | | 985 MW |

- Notes: 10. Island Demand is supplied by NLH generation and purchases, LIL Imports plus generation owned and operated by Newfoundland Power and Corner Brook Pulp & Paper (Deer Lake Power, DLP).